



Woodmen Road Corridor Improvement Project – Phase 1

FOR IMMEDIATE RELEASE:

Contacts: Chad Dubs
(303) 356-3372
Or
Mary Scott
(719) 385-5248

March 23, 2011

TURNING MOVEMENTS RESTRICTED: Woodmen Road to Shift onto New Bridge

Beginning on Saturday, March 26, 2011, at 8 p.m., the process of shifting Woodmen Road traffic onto the new bridge will begin. During this traffic shift and for fourteen days following, four turning movements will be closed. The necessary turn restrictions are needed to complete ramp construction. The traffic switch will occur in several steps. It is anticipated that sufficient ramp construction will be completed by April 9 to allow these turning movements to reopen although not fully in their final configuration. Construction crews will be working around the clock to complete this operation. The start of this traffic shift is particularly dependent on a favorable two week weather forecast. An unfavorable weather forecast can postpone the switch at the last minute. Key steps include:

- Prior to the traffic switch, lane closures on Woodmen Road will be needed to facilitate temporary lane striping.
- Woodmen Road traffic will be shifted onto the new bridge and the temporary traffic signal on Academy Boulevard will be removed.
- **With Woodmen Road traffic on the bridge, turns from Woodmen Road to northbound Academy Boulevard; and from southbound Academy Boulevard to Woodmen Road will not be available for 14-days.**
- Traffic signals on the bridge will control turning movements from Woodmen Road to southbound Academy Boulevard and from northbound Academy to Woodmen.

- Academy Boulevard will be reduced to two lanes each direction from Shrider Road to York Road for eight weeks to complete work on retaining walls, barrier and medians.
- Northbound Academy Boulevard access to the Woodmen Commons Shopping Center near Mimi's will close and will be placed in its final configuration. Northbound Academy Boulevard traffic will need to use Shrider Rd. or eastbound Woodmen Rd. to access Woodmen Commons Shopping Center.
- The new ramp from Woodmen Road to southbound Academy Boulevard access to Earl Drive and the Woodmen Valley Shopping Center (King Soopers) from Woodmen Road to southbound Academy Boulevard will open.

Drivers are reminded to slow down (posted speed limit is 30 mph in this construction area), watch for signs along the new alignment, and exercise caution.

Dan Krueger, the City's project manager, explained "this is the final major traffic shift scheduled for this project. This shift has been planned for a few years due to the unavoidable disruption of traffic during this part of the project. The City is requesting that everyone please take their time and drive safely as we change the roadways to their final configuration. After the 14-day switch period, Academy Boulevard will be free-flowing with no traffic signals between Shrider and York Roads and you will no longer have to wait on Woodmen Road for the traffic on Academy to pass through the intersection.

Substantial completion of the project is still on schedule for September 2011. However, we expect that drivers will see an improvement in traffic flow before the beginning of summer."

Drawings of the Woodmen Road shift onto the new bridge and the anticipated 14-day traffic configurations; together with the posted detours for commuter traffic are attached.

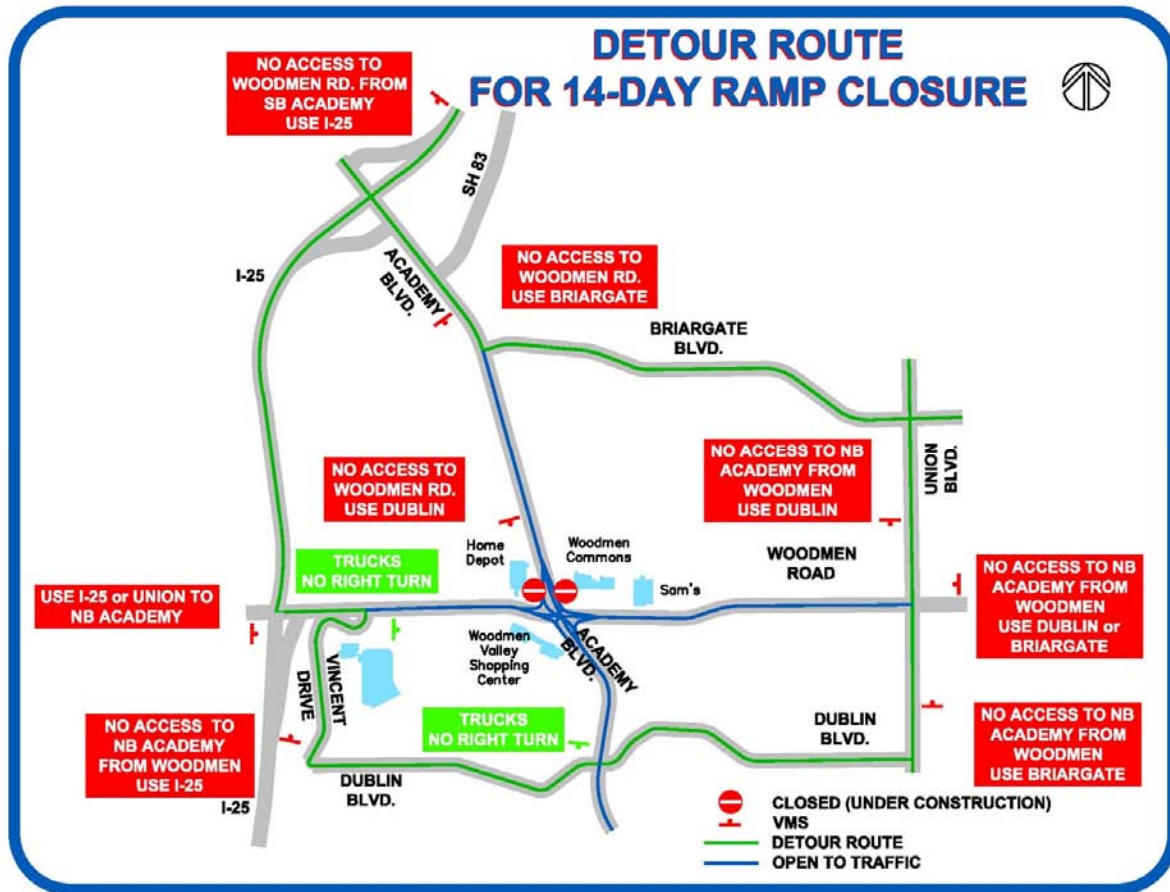
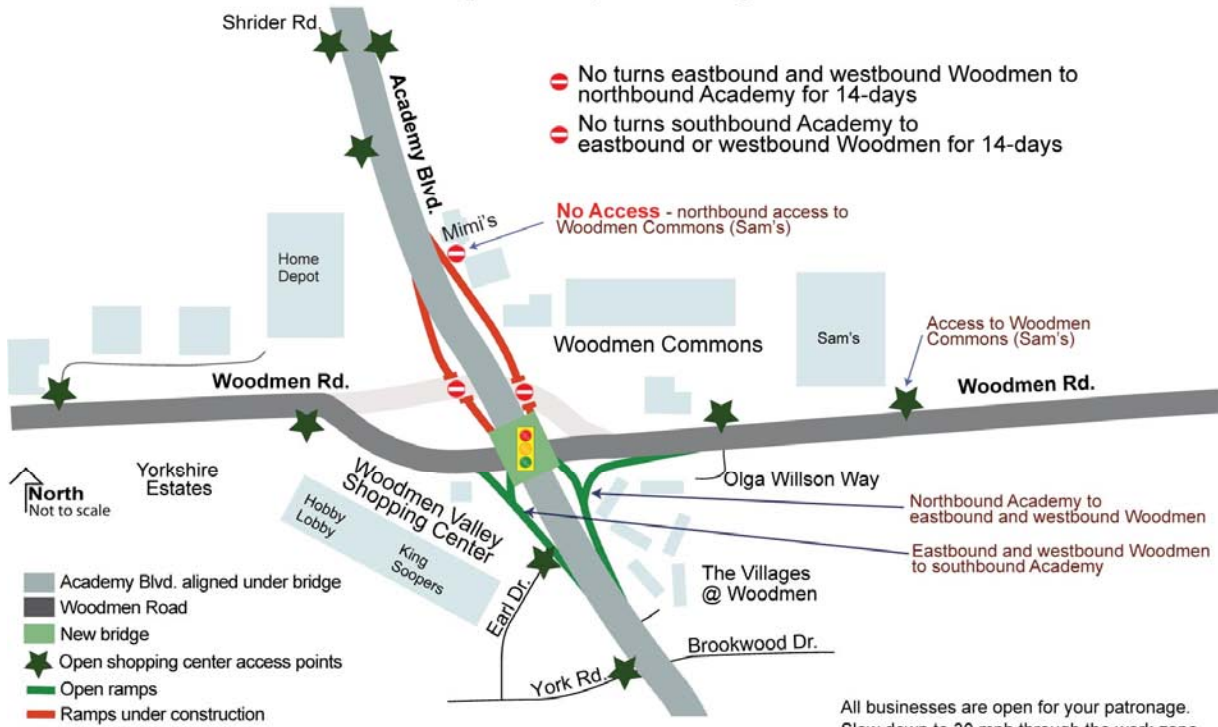
The Phase 1 Construction Project (Campus Drive to Stinson Road) will widen Woodmen Road to six lanes and build a grade-separated interchange at Woodmen Road and Academy Boulevard. Construction of these improvements is the first step to reduce congestion along Woodmen Road. The project started in September 2009 and is anticipated to be completed by September 2011.

For the latest updates of Woodmen Road construction and to sign up for the latest news by e-mail, please log on to www.woodmenroad.com. The web site also has an FAQ on suggested detour routes to popular North Academy Boulevard destinations. For general questions regarding the City PPRTA projects, contact Mary Scott (719) 385-5248.

####

Woodmen Road Shift onto New Bridge

Anticipated 14-day traffic configuration



MEDIA OPPORTUNITIES

Dan Krueger, the City Project Manager, will be available for interviews on Friday, March 25, at the project office: 6755 Earl Drive, Suite 202, Colorado Springs from 8 a.m. to 5 p.m. Please schedule a meeting time in advance with Chad Dubs (303-356-3372) and check in at the project office prior to visiting the construction site. Photo opportunities will be made available, but we need to ensure your safety in the construction zone. Maps are available (see above) in pdf or jpg format.