



We Create Community

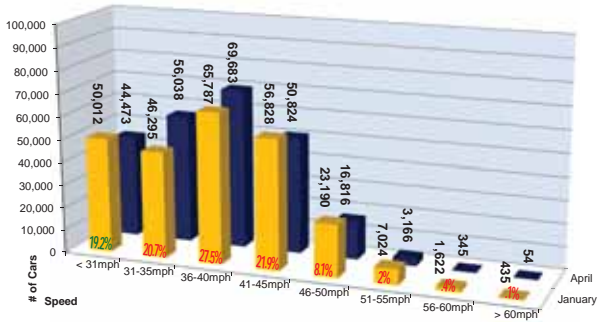
Woodmen Road Corridor Improvement Project
c/o URS Corporation
9960 Federal Drive, Suite 300
Colorado Springs, CO 80921

PRSR STD
U.S. POSTAGE
PAID
COLORADO SPRINGS, CO
PERMIT NO. 360



Issue #6 June 2010

Traffic Speeds through Woodmen & Academy Intersection



Please Slow Down

Based on two-day traffic studies performed in January and April 2010 in the Woodmen Road Corridor Improvement Project -Phase One limits, the chart above documents traffic speeds and percent of total traffic in each speed range.

With an average of 123,000 cars per day, almost 80% of the traffic, or 98,463 cars per day, exceeded the 30 mph construction zone speed limit. For the safety of the traveling public, pedestrians, and construction crews, please reduce your speed!

Stay Current:

- www.woodmenroad.com
- sign up on our website and we'll add you to our e-mail Alert list.
- No internet access? If you wish to receive the quarterly newsletter through the mail, please call us at 266-8085. If you are currently receiving a newsletter, you do not have to sign up again.

Contacts:

City of Colorado Springs
Dan Krueger
Edward Kraemer & Sons, Inc.
Chad Dubs or Cheryl Everitt
Project Hotline
719-266-8085
Project Website
www.woodmenroad.com
Project E-mail
ProjectTeam@woodmenroad.com

Summer Construction:

This summer the focus of construction shifts from utility relocations and wall construction to:

- excavating for Academy Boulevard final alignment
- completion of the structural concrete on Woodmen Road bridge
- construction of the embankment at the east end of the bridge and retaining walls in the southeast quadrant of the intersection

While there will be a lot of dirt moving, concrete pouring and concentrated activity at the intersection this summer, the end result will be worth it. Our website provides conceptual simulations of what the project will look like when completed. View the simulations at: www.woodmenroad.com/videos-photos.htm.

Please be patient as we move toward achieving this vision depicted by the image below. At the end of the summer, the project team expects that Academy Boulevard will shift to its final alignment.



LEFT: Bridge construction begins with the drilling of caisson holes for the foundation support. The drill pictured (or another like it) will be used to drill a total of 54 caissons. The hole diameters range from 30 inches at the abutments to 36 inches under the columns. Rebar "cages" will be placed inside the 35-foot-deep caissons and then backfilled with concrete.



ABOVE: This aerial photograph was taken just after the Academy Boulevard shift in March 2010. The work area is larger than it appears when you are driving through the construction area. Compare it to the simulation image at the left to see what the finished construction will look like when completed!

Businesses throughout the construction area are open for your continued patronage.

Major Interim Traffic Configurations Complete

Academy Boulevard shifted west March 22 at 5:30 a.m.

Working around the clock beginning Saturday, March 20 at 7 p.m., the project team began the process of shifting Academy Boulevard to the west. This temporary alignment allows the project team to excavate Academy Boulevard approximately twelve feet to begin the work to build the bridge that will carry Woodmen Road over Academy Boulevard. This was the first of two major shifts.

Prince Drive at Woodmen Road officially closed and York Road opened March 31 at 7 a.m.

Prince Drive had been temporarily opened in early November to allow access during construction activities. The residents and businesses along York Road were very patient and understanding, and the project team appreciates their flexibility.

Woodmen Road shifted north for the second major traffic shift in late-May

This shift completed the Woodmen and Academy intersection temporary realignment to allow the construction of the bridge structure and lowering of Academy Boulevard. This traffic configuration will remain until fall 2010. The new temporary alignments maintain three lanes in each direction on Academy Boulevard, and Woodmen Road continues to have two lanes in each direction.

New Earl Drive between York Road and the Woodmen Valley Shopping Center (King Soopers) opens to traffic in early June

Motorists headed northbound on Academy Boulevard can now access the shopping center from York Road. This work was originally sequenced to occur in Step 6, during the September 2010 to June 2011 time frame. In support of the area businesses during the construction, the City reassessed the schedule. This early action should help patrons of the shopping center access the businesses, relieve some congestion on Academy Boulevard, and increase safety.

In addition to the new Earl Drive access to the shopping center, the Woodmen entrance has been moved to the northwest property corner near Hobby Lobby. Work to move the access point is ongoing, and the temporary traffic signal in place now is very near to the entrance's final location.



York Road, looking west, shows the new curb and gutter, sidewalks, and future entrance to the new Earl Drive and Woodmen Valley Shopping Center.

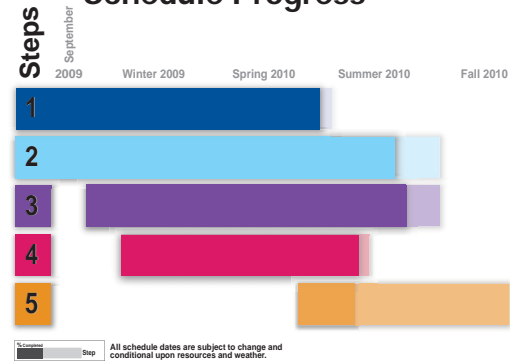


The new Earl Drive is set to open in early June. Photo taken in late May.

FAQ: Who monitors and is responsible for the length of time traffic signals are green on Woodmen or Academy?

The project team works very closely with the Colorado Springs City Traffic Division prior to the implementation of new traffic alignments. Some traffic alignments were anticipated during the design phase, and traffic studies and models were available to analyze and estimate optimum light timing. For other traffic signal adjustments, City Traffic implements and controls the traffic light timing and durations and adjusts accordingly. After new traffic changes are implemented, City Traffic continues to monitor the timing and adjusts accordingly to attempt to maximize the traffic movements through the various intersections.

Schedule Progress



Mike Ingram, Edward Kraemer & Sons, Inc., senior project manager, answers questions at the project team Thank You! BBQ on March 2010.

Thank You! March Project Team Sponsored BBQ

The third project BBQ, held in conjunction with The Home Depot Shopping Center's Customer Appreciation Day, was held on March 20, 2010, was well attended. The project team, with assistance from Ann Devere of the Woodmen Enhancement Committee and The Home Depot, fed approximately 281 people, free of charge. Many of the retail outlets from all four quadrants provided coupons and demonstrations.

The next BBQ will be held at the Woodmen Valley Shopping Center on June 12, 2010, from 11 a.m. to 1 p.m. The BBQs are generally held every other month and are advertised through the local businesses. As you visit the stores look for information about the next Thank You! BBQ.

Next BBQ: Saturday, June 12, 2010 11 a.m. - 1 p.m.
Woodmen Valley Shopping Center
Please plan on joining us!

The City and its project team are committed to keeping **two through-lanes** in each direction on Woodmen Road and **three lanes** on Academy Boulevard open during peak traffic hours.

For listings of key activities and their status, please visit www.woodmenroad.com and click the "Phase 1 Construction has Begun" link, which will take you to the Woodmen-Academy construction information.

Spring Completions

- 42-inch water line
- walls and fences at:
 - Wag N' Wash/Home Depot
 - the Villages at Woodmen
 - Yorkshire Estates
 - Brookwood Estates
- Wildwood cul de sac
- York Road and new Earl Drive improvements

Did You Know?

Sign of the Rose Florist, in the Woodmen Valley Shopping Center (King Soopers), has been in that location since 1988. However, it was originally started in 1906 by General Palmer's gardener at Glen Eyrie! The business was sold several times before Linda Doole acquired it over 22 years ago. Linda provides flowers, plants, and silk arrangements through local and national delivery (FTD and Telefloral) — and, yes, she welcomes walk-ins. She employs a staff of FTD Master Designers. Linda says she strives to offer each customer superior quality and unsurpassed service. The Sign of the Rose is open Monday - Friday, 9 a.m. - 6 p.m., and Saturday from 9 a.m. - 5 p.m. Visit www.signoftheroseflorist.com to see her wonderful floral arrangements for every occasion.

"Did You Know" reveals interesting tidbits regarding landmarks, history, people and businesses in the project area. If you have an interesting fact to contribute, let us know!