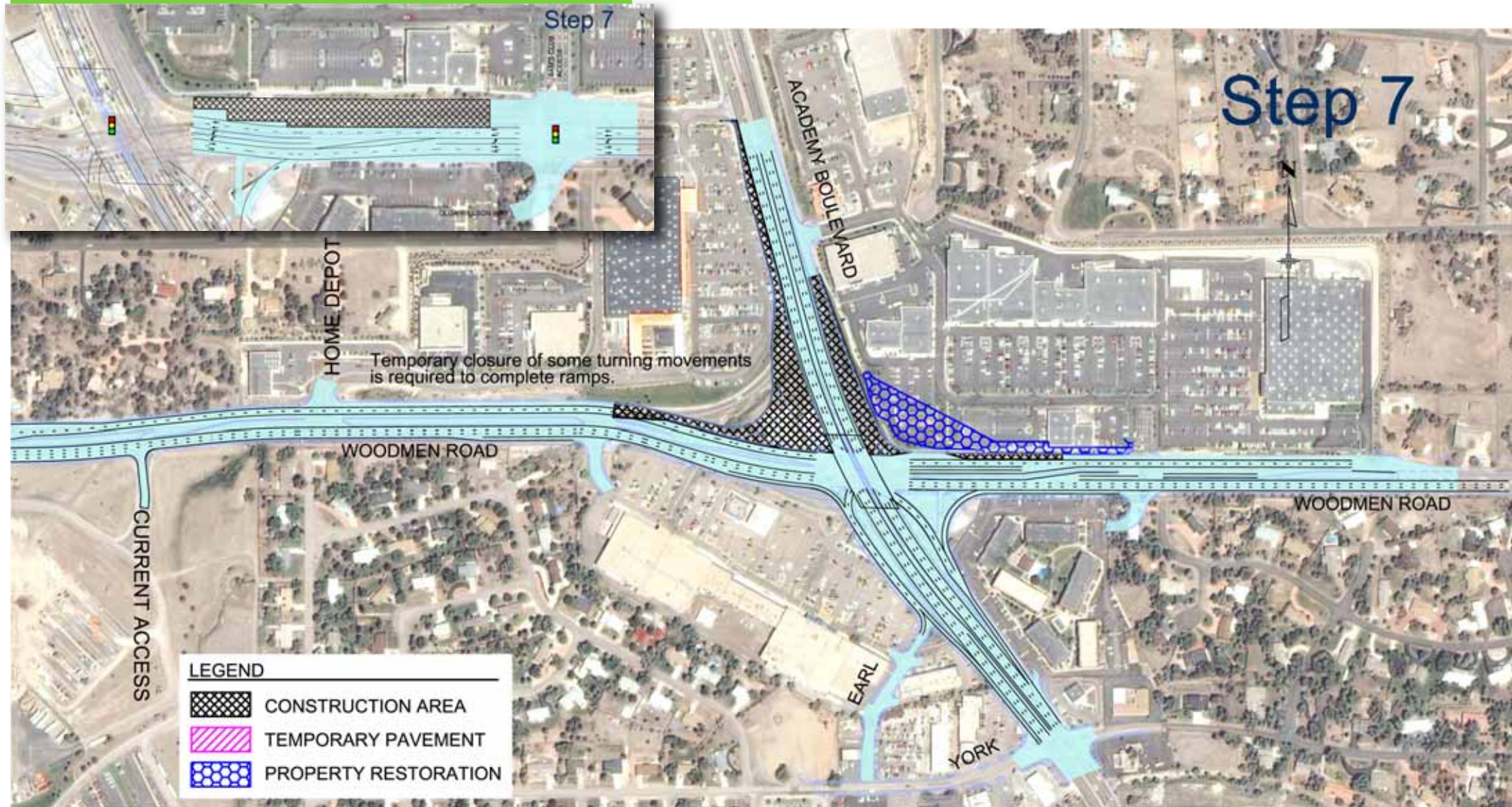


Project Construction **Step 7** June 2011 - July 2011



Traffic and temporary alignment:

- Woodmen Road traffic shifts to new bridge.
- Turning movements restricted for 14 days to allow completion of ramps.
 - Westbound and eastbound Woodmen Road to northbound Academy Boulevard
 - Southbound Academy Boulevard to eastbound and westbound Woodmen Road

Key activities:

- Complete ramps at northeast and northwest quadrant of intersection using fast-track construction (day and night work)
- Remove westbound Woodmen Road temporary alignment
- Restore Woodmen Commons Shopping Center parking lot