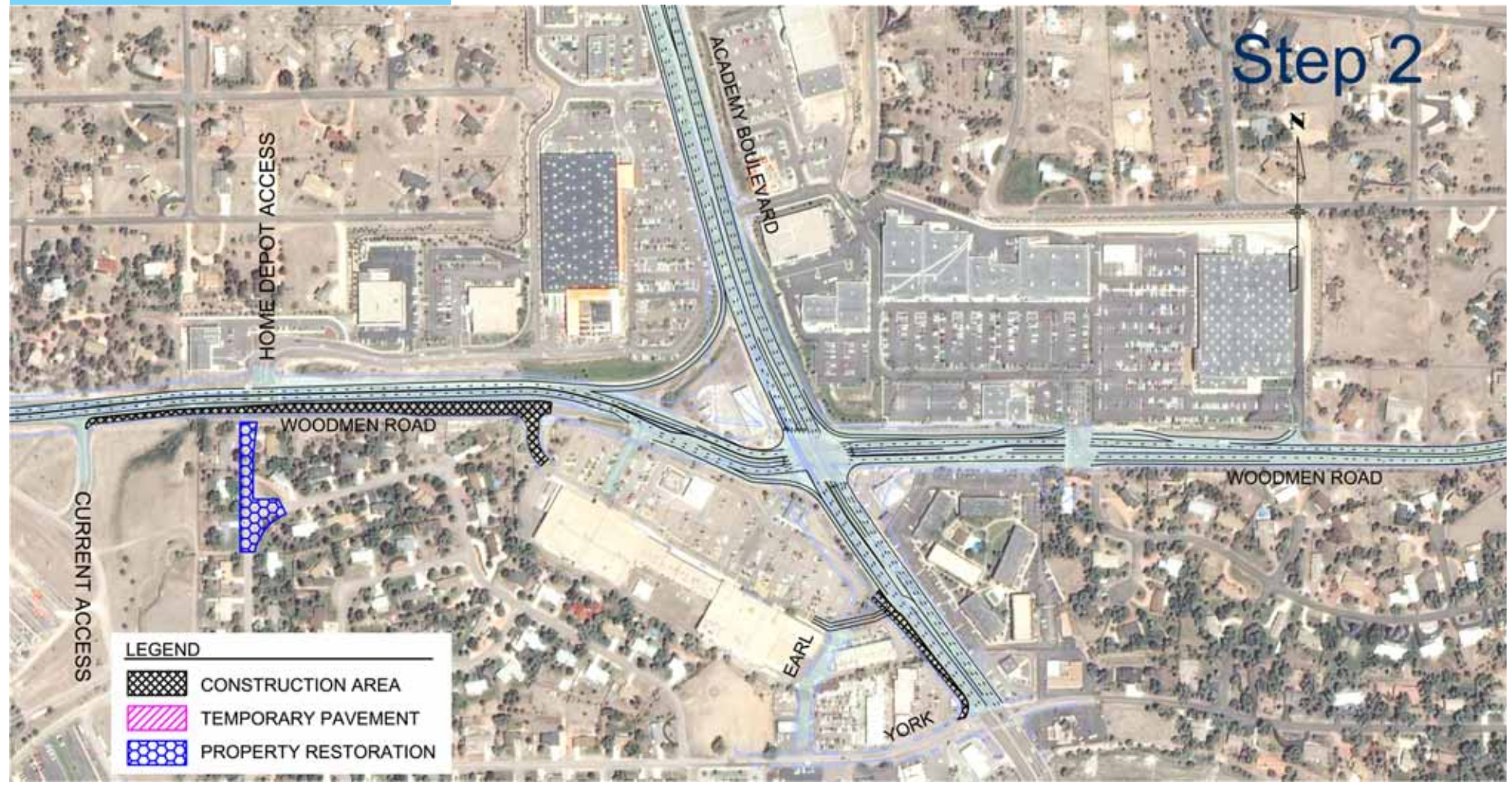


Project Construction **Step 2** September 2009 - July 2010



Traffic and temporary alignments:

- Traffic on Woodmen will shift north from Campus Drive to Hobby Lobby entrance while the south side is widened between the Current entrance and the Hobby Lobby entrance.

Key activities:

- Widen south side of Woodmen Road between Current entrance and Hobby Lobby entrance
- Continue storm drain installation and outfall structure construction through Earl Drive and west side of Academy Boulevard
- Construct retaining walls at Yorkshire Estates, sound walls at Brookwood Estates, and concrete fences at Palace and Prince Drive
- Install 42-inch water line under anticipated Woodmen Road temporary alignment